

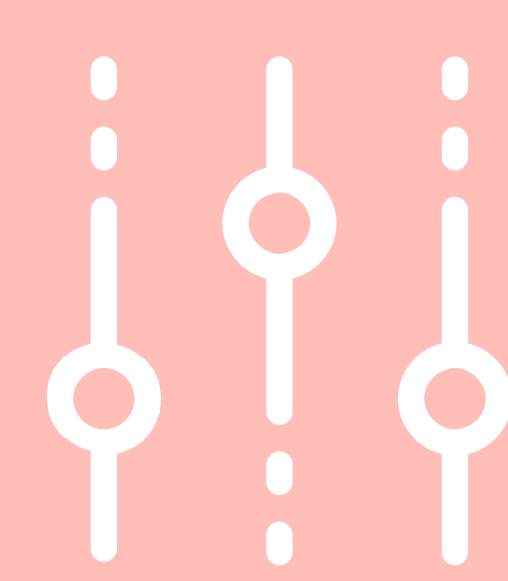
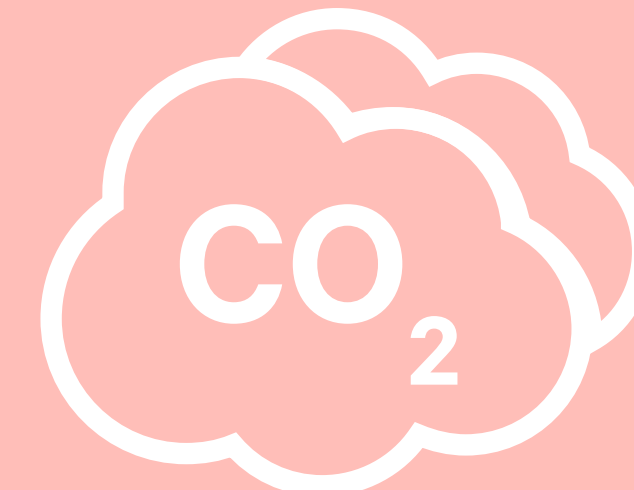
PCAF European building emission factor database

Access the database at
building-db.carbonaccountingfinancials.com

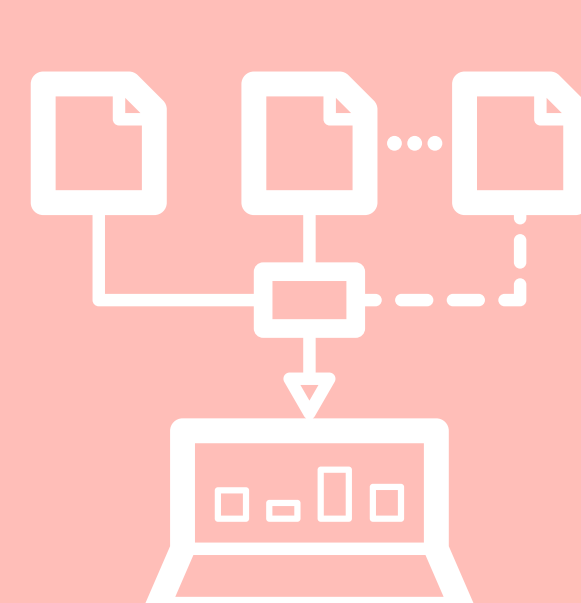
Powered by
Financing towards net-zero buildings
a PCAF project

What it offers:

A **specified set of emission factors** for **commercial real estate and mortgages** for all countries in the **European Union**, as well as **Norway, Switzerland**, and the **United Kingdom**



Many filtering options (asset classes, European countries, residential and non-residential building types and EPC ratings) to extract the **specified emission** or **energy intensity per unit or floor area**



Available for free to all financial institutions and further interested stakeholders



Based on **publicly available sources**

Web-based, providing downloadable files with emissions factors



Easy to access and user-friendly

How it works



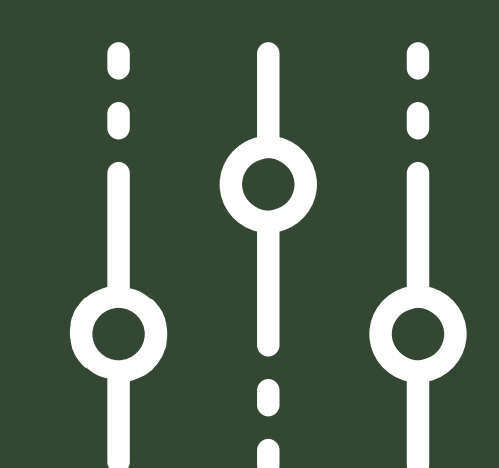
1. Register



You will receive an email to verify your account.

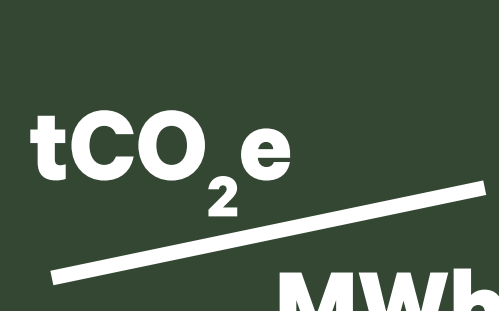


2. After verification, **access the database**



3. Apply your appropriate **filters**

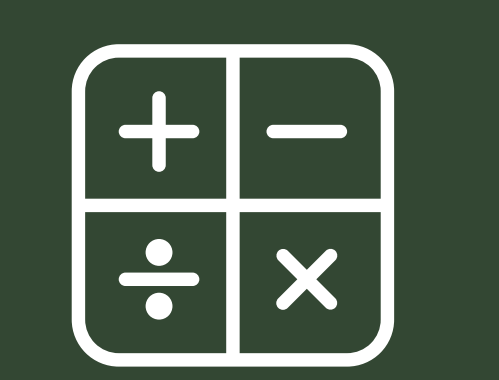
TIP: a chart is automatically created based on selected data



4. Depending on your applied filters, the emission or energy intensity is expressed either in **tCO₂e** or **MWh per floor area (m²)** or **building unit (#)**



5. **Export data** in different formats (xls., xml., csv.)



6. **Use the data** to calculate the emissions of your portfolio

Filter your data by:

Asset class

Commercial Real Estate or Mortgages

Geographies

All EU-countries, NO, UK, CH

Building types

COMMERCIAL REAL ESTATE:

Retail (High street; Shopping center; Strip mall); Office; Industrial distribution warehouse; Hotel; Healthcare; Leisure and sport facilities; Non-residential total; Multi-family house (MFH)

MORTGAGES:

Single family house (SFH); Multi-family house (MFH); Residential total

EPC ratings

Emission factors can be extracted per country-specific energy performance certificate (EPC) rating per floor area or unit.



FAQs

Who can access the database?

The database is available for free to any interested stakeholder.

Is there a user manual for the database?

Yes, the user guide contains all information on topics as key features, sources and describes all steps in detail as to how to use the database and extract data. The user guide can be found at the landing page of the PCAF European building emission factor database website.

What is the origin of the data?

On behalf of PCAF, Guidehouse Netherlands B.V. developed the database and consolidated data from several highly qualified international and national sources to calculate the emission factors. All data sources are transparently cited for each emission factor.

Access the database at
building-db.carbonaccountingfinancials.com

For more information and answers:
[carbonaccountingfinancials.com/
financing-towards-net-zero-buildings](https://carbonaccountingfinancials.com/financing-towards-net-zero-buildings)